

# Statewide Accountability: The Fox Point-Bayside Response

---

Fox Point-Bayside School District

Board of Education

May 2012



# College and Career Ready

---



## College and Career Ready Expectations for All Students

### Interim Steps

- **Rigorous Standards** include calculating WKCE cut scores based on the NAEP scale.
- **Meaningful Assessments**

# Accountability Reform

Year	Assessment	Scale used for accountability
2011-12	WKCE	Final year for current WKCE performance levels; begin field testing of cut scores based on NAEP
2012-13	WKCE	Use cut scores based on NAEP on WKCE student reports, and for school and district accountability report cards
2013-14	WKCE	Continue using cut scores based on NAEP for WKCE and accountability report cards
	Smarter Assessment Field Test Dynamic Learning Maps Field Test	Field test Smarter and Dynamic Learning Maps assessments and define performance cut scores to be used across all participating states
2014-15	Smarter Assessment System Dynamic Learning Maps	Fully implement Smarter and Dynamic Learning Maps assessment Smarter with consortia-defined performance cut scores

# Differentiated Recognition, Accountability and Support

- **Priority Areas**

- **Achievement**

- Reading Proficiency
- Mathematics Proficiency

- **Growth**

- Student Growth Percentiles (SGPs)
- All growth is rewarded but more growth expected for those further behind

- **Gap Closing**

- **On-track to Graduation (K-8)**

# Accountability Ratings

- A standard setting process—guided by DPI—will determine how each of the four priority areas are weighted and combined into the index score.
- The score will place schools into one of six rating levels:
  - *Significantly Exceeding Expectations*
  - *Exceeding Expectations*
  - *Meeting Expectations*
  - *Meeting Some Expectations*
  - *Meeting Few Expectations*
  - *Persistently Failing to Meet Expectations*

### School Rating

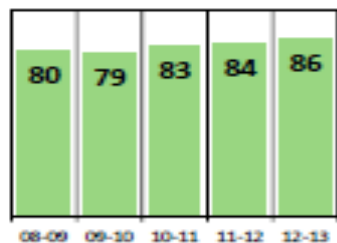


**Exceeding Expectations**

Significantly Exceeding Expectations	91-100	<i>and no red flags</i>
Exceeding Expectations	76-90	<i>and no red flags</i>
Meeting Expectations	61-75	<i>and no red flags</i>
Meeting Some Expectations	51-60	<i>or &gt;60 with a 1 red flag</i>
Meeting Few Expectations	41-50	
Persistently Failing to Meet Expectations	0-40	

### Recent Performance

School Scores Last 5 Years



### Enrollment

**605**

Demographics	
Race/Ethnicity	
American Indian	2%
Asian	8%
Black (not Hispanic)	19%
Hispanic	28%
White (not Hispanic)	43%
Student Groups	
Students with Disabilities	29%
Economically Disadvantaged	48%
English Language Learners	28%

### School Accountability Index

<b>Student Achievement</b>	<b>92 / 100</b>
Reading Achievement	47 / 50
Mathematics Achievement	45 / 50

<b>Closing Achievement Gaps</b>	<b>72 / 100</b>
Achievement Gaps	31 / 50
Graduation Gaps	41 / 50

<b>Postsecondary Readiness</b>	<b>94 / 100</b>
Graduation	58 / 60
ACT Performance/Participation	18 / 20
Attendance	18 / 20

<b>OVERALL SCHOOL SCORE</b>	<b>86 / 100</b>
School score is the average of the three subscale area scores.	

### School Accountability Indicators

#### Index Improvement Goal

This Year's Goal	77
School Score	86

#### Test Participation

Minimum Rate	95.0%
Lowest Subgroup	96.3%

#### Dropout Rate

Maximum Rate	6.0%
School Rate	2.2%

#### Absenteeism

Maximum Rate	13.0%
School Rate	8.3%

### School Rating Determination

Overall School Score	86	➔	<b>Exceeding Expectations</b>
Number of Red Flags	0		

# DRAFT – 2/20/12

[dpi.wi.gov/reportcard](http://dpi.wi.gov/reportcard)

Public schools, charter schools, and private schools participating in a Parental Choice Program operate under different structures. These different types of schools should not be directly compared.



# EDUCATOR EFFECTIVENESS

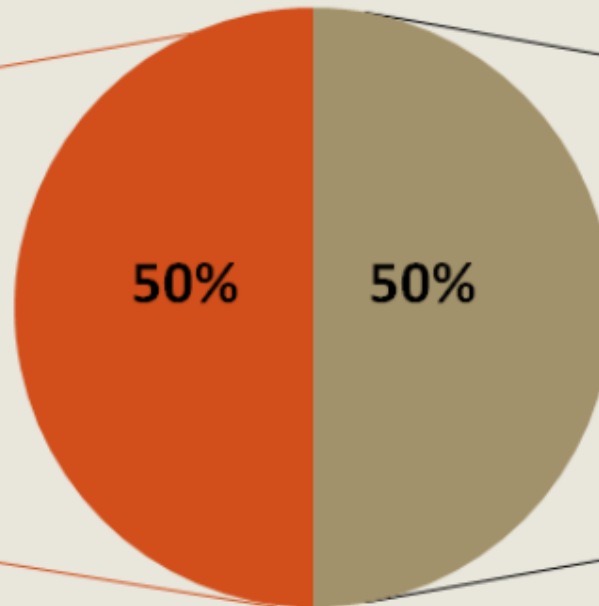
## Educator Evaluation

### Teachers

- InTASC standards
- Danielson's 4 domains and 22 components

### Principals

- ISLLC standards



- State assessment (value-added growth)
- District assessment data
- Student Learning Objectives (SLOs) or School Performance Objectives (SPOs)
- School-wide reading (Elem/Middle)
- Graduation rate (High School)
- District choice

■ Models of Practice

■ Student Outcomes

# IMPLEMENTATION TIMELINE

- New Accountability system begins
- New Proficiency benchmarks for WKCE reading and mathematics established
- Educator Effectiveness system design continues

- SBAC Field testing
- Educator Effectiveness system pilots

- All districts using Statewide Student Information System

2011-12

2012-13

2013-14

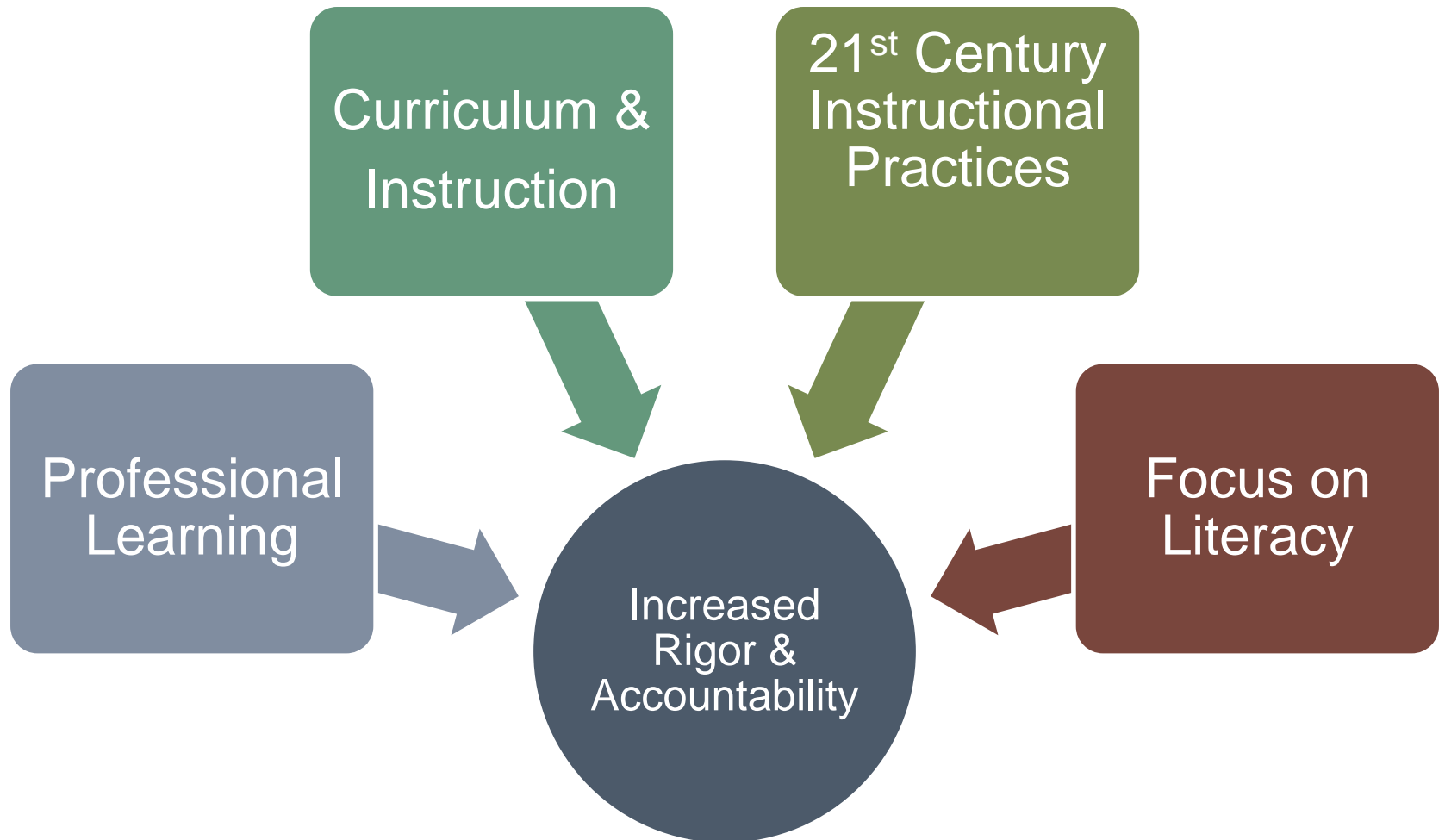
2014-15

2015-16

- New School Report card issued
- Statewide release of WISEdash
- First districts using SSIS
- Response to Intervention implemented

- Common Core Standards fully incorporated into curricula
- SBAC and Dynamic Learning MAPS replace WKCE and related assessments
- Educator Effectiveness system in place

# FPBS's Response



# FPBS's Response

- Professional Learning
  - Common Core
  - GT and Rtl
  - Learning Walkthroughs
  - Gradual Release of Responsibility
  - Teacher Effectiveness
  - Northshore Technology Academy
  - **COMING SOON!**
    - Workshop Model
    - Data Driven Student Instruction
    - Ian Jukes

# FPBS's Response

- Curriculum and Instruction
  - Curriculum Council
  - 4K-8 alignment
  - Curriculum Approval Process
  - Trade Book Approval Process
  - Development of Student Learning Targets
  - Build Your Curriculum Portal
  - Assessment Literacy
  - Teacher Effectiveness

# FPBS's Response

- Literacy Focus
  - Building RtI focus 2011-12 SY
  - 2012-13 District Focus
    - Reading in the Content Areas
    - Readers Workshop
    - Literacy Coach
    - 4K-8 alignment

# FPBS's Response

## 21<sup>st</sup> Century Instructional Practices

- Problem-based Learning
- Meeting students where they are
- Integrated learning opportunities
- Technology Integration Tools
  - iPad, BYOD, SMARTBoards, etc.
- Communication, Collaboration, Creativity and Critical Thinking (4C's)
- Teacher Leaders

We need to  
prepare students for  
**THEIR**  
future not **OUR** past

-Ian Jukes, educator and Futurist.